

# CERTIFICATE OF LOCATION OF GOVERNMENT CORNER

EAST QUARTER Corner of Section 33, Township 108N, Range 39W

5th Principal Meridian, State of Minnesota, County of MURRAY

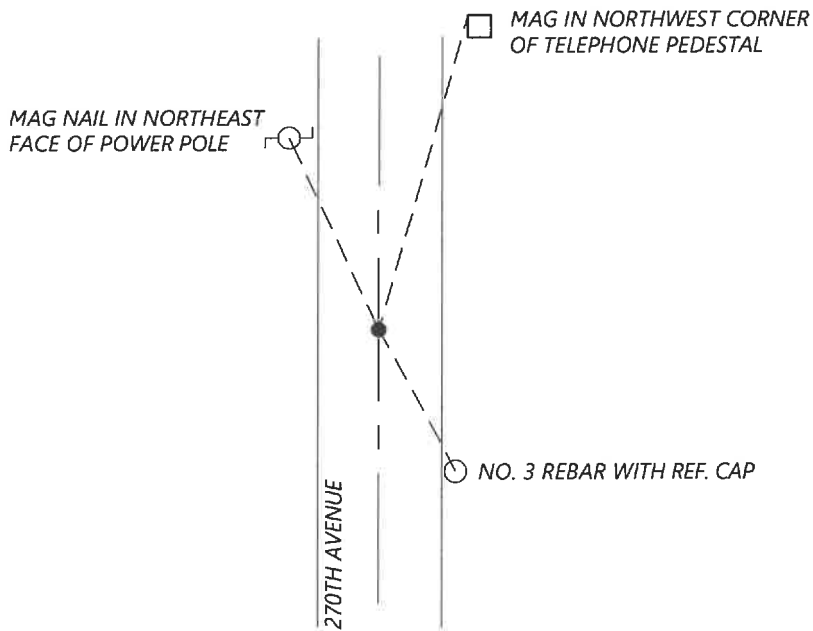
At the corner location shown on the sketch:

On 8/27/2020 found a NO. 4 REBAR WITH BROKEN CAP. DOWN 0.5FT

left monument as found  lowered monument  removed monument (explain)

On \_\_\_\_\_ placed a \_\_\_\_\_

### SKETCH OF REFERENCE TIES



N.T.S.

Statement of evidence for this corner location is on back of this page.

I hereby certify that this document was researched and prepared by me or under my direct supervision and that I am a licensed Land Surveyor under the laws of the State of Minnesota.

Signature [Handwritten Signature]

Date 6/17/2021 License No. 45874

Title:

- Land Surveyor
- Professional Engineer
- County Surveyor
- County Engineer

### OFFICE OF THE COUNTY RECORDER

County of Murray

I hereby certify that this document was filed in the Co.

Recorder's office at \_\_\_\_\_ M. on the \_\_\_\_\_ day of \_\_\_\_\_ A.D. 20

County Recorder [Handwritten Signature]

by JUN 22 2021, Deputy

DOCUMENT NO. \_\_\_\_\_

**Statement of Evidence:**

East Quarter Corner of Section 33, Township 108 North, Range 39 West, 5th Principal Meridian, Murray County, Minnesota.

1861 *July, GLO Notes: Set post in mound.*

N/A *Survey record for Section 34 shows the original government corner was not found. A distance of 2645.0ft is shown to the Northwest and Southwest section corners.*

1980 *October, Corner certificate by LS 12967 shows that he found a field stone and placed a  $\frac{1}{2}$ " rebar with cap #12967 over it.*

2013 *August, Highway Department records show a found iron with cap #12967 at the corner. Coordinates show as:  
N: 197810.34 E: 564030.95*

2020 *September, Westwood Professional Services searched and found a  $\frac{1}{2}$ " rebar with broken cap. Did not find any existing reference ties. Iron fits coordinates from Highway Department records. I accepted the found monument and set new reference ties.*

Analysis of the recovered data, field evidence and survey measurements, indicates that the monument found is the correct perpetuation of this corner. For additional information concerning this corner please contact Westwood Professional Services.